

NEIGHBOURHOOD PLAN FOR LEIGH

have **YOUR** say!

Leigh on Sea
Town Council News

issue 05



**PULL
OUT
ART TRAIL
MAP**
inside centre

Arts & Culture | Clubs & Societies | Businesses
Council Facilities & Outside Spaces
Council Budget 2017-18

Welcome to our fifth newsletter, it's all about letting you know what the Council are up to on your behalf.

As you will note we have a new Town Clerk, this is due to the retirement of Paul Beckerson, who we wish well in this new chapter of his life. This issue introduces you to the development of a Neighbourhood Plan for Leigh. We want to hear your views and invite you to participate in its progress as we begin discussions with Southend Borough Council. We also feature the Leigh Art Trail, now in its 20th year and have a special pull out guide and information in the centre-fold for you. We have a local business initiative promoting our wonderful independent shops, bars, restaurants and coffee shops. These help keep Leigh a unique shopping experience in place of the chains in other shopping areas. We count on you all to support them so that we don't end up losing them.

I must recommend reading up on the Leigh Heritage Trail and checking out its web link if you want to learn more about the history of Leigh and keep fit at the same time.

And for our young readers there is a colouring competition, so as usual a stimulating magazine full of information and entertainment about Leigh this summer.

Jane Ward,
Editor.



01702 716 288

ltnnews@leighonseatowncouncil.gov.uk
www.leighonseatowncouncil.gov.uk

Calendar

June 2017

Tuesday 6th June – Full Council & Community Facilities
Tuesday 13th & 27th June – Planning & Licensing
Saturday 10th – 17th June – Leigh Art Trail
Friday 16th June – Leigh Farmers' Market 9-12
Tuesday 20th June – Environment & Leisure
Thursday 22nd – 25th June – Leigh Folk Festival

July 2017

Tuesday 4th July – Policy & Resources
Sunday 9th July – Italian Piazza event – Strand Wharf 11am-4pm
Tuesday 11th & 25th July – Planning & Licensing
Sunday 16th July – Music-on-Sea Event – Strand Wharf 11am-4pm
Tuesday 18th July – Full Council
Friday 21st July – Leigh Farmers' Market 9-12
Sunday 30th July – Kids' Zone/ Duck Race with Leigh Lions –
Strand Wharf 11am-4pm

August 2017

Sunday 6th August – Heritage Day with Lower Thames Rowing Club/
Leigh Society – Leigh Old Town
Tuesday 8th & 22nd August – Planning & Licensing
11th August – 13th August – Southend Carnival Beer Festival at LCC
Tuesday 15th August – Environment & Leisure
Friday 18th August – Leigh Farmers' Market 9-12

September 2017

Tuesday 5th September – Policy & Resources
Sunday 10th September – Old Leigh Regatta
Tuesday 12th & 26th – Planning & Licensing
Friday 15th September – Leigh Farmers' Market 9-12
Tuesday 19th September – Full Council

October 2017

Tuesday 3rd October – Community Facilities
Tuesday 10th & 24th October – Planning & Licensing
Tuesday 17th October – Environment & Leisure
Friday 20th October – Leigh Farmers' Market 9-12
Saturday 28th October 2017 – Royal British Legion Coffee Morning 9am-1pm

November 2017

Friday 7th November – Policy & Resources
Tuesday 14th & 28th – Planning & Licensing
Friday 17th November – Leigh Farmers' Market 9-12
Tuesday 21st November – Full Council
Friday 24th November – Leigh Lights

A NEW TOWN CLERK FOR LEIGH



The role of a Town Clerk is an historic and honourable one dating back to 1439 when 'clerk' came to mean scholar, especially one who could read, write and thus serve as secretary, accountant and recorder. Today's role sees a Town Clerk immersed in many other roles that the modern officer must fulfil including legal and financial advisor, publicity officer, events organiser, staff supervisor etc... in effect the Chief Executive of the Council, being fully involved in community life.

Leigh on Sea Town Council were delighted to internally appoint Helen Symmons as your first female Town Clerk, notably this was on the same day that Southend Borough Council appointed its first female Chief Executive and in Leigh on Sea Town Council's 21st year. Helen actually began her working life in Leigh, joining Barclays Bank in 1983 and working at both the Leigh Road and Broadway branches until 1987 in the days of bank managers in branches and a long row of cashiers in the banking hall!

Her banking days took her to Basildon, London and finally Grays when she decided to venture in to the world of corporate hospitality, setting up in partnership an Event Management company which took her all over the country for 14 years, working for a host of corporates and charities and arranging a variety of events from nationwide golf tournaments, conferences and company celebrations.

Helen and her husband have lived in Leigh for 23 years and when their son arrived she decided to 'retire' from working life. That said when school life began for young Freddie, Helen took an active role in the Parents Association and became the Chairman for three years. Fortunately at the point when Freddie became settled at Junior school, she saw the job advertised of part time Receptionist at our new Community Centre in early 2013 and the rest as they say is history!

Meet the Staff

Helen Symmons has now taken office as from 10th April. Having started as part time Receptionist in 2013 a year later she was promoted to the Events and Allotments Officer and a year after that became Assistant Town Clerk where she undertook and passed the recognised Town Clerk qualification.

Since Helen has been in her new role she has used experience of the Council and in anticipating its needs, restructured the internal staffing to future proof the Council and take it progressively forward.

Duties and responsibilities as follows...

| | |
|---|--|
| Community Centre and Council Finances | Assistant Responsible Finance Officer – Emma Stratton or Finance Assistant – Sue Bedwell-Smith |
| Matters relating to Allotment Tenancies, Planning committee matters, Community Centre Events, Committee Agendas and Minutes | Assistant Proper Officer – Abbie Cotterell |
| Maintenance for the Skate Park, Strand Wharf, Allotment sites and Community Centre maintenance | Facilities Manager – Graham Davison |
| Council Events, projects and volunteer programme | Events & Projects Officer – Emily Dean |
| Marketing and Council profile | Marketing & Profile Officer – Francesca Smith |
| Community Centre bookings | Bookings/Administrative Assistant – Hannah Mumford |
| Community Centre day to day running | Senior Caretaker – Ashley Curtis and his caretaking staff |
| Community Centre front desk enquiries and SBC related enquiries | Receptionist – Liz Evans |

In this issue

| | |
|--|-------|
| Community Centre News | 4 |
| Town Council Reports | 5-7 |
| Town Council 2017/18 Budget | 8 |
| Art in the Community Centre | 9-10 |
| Leigh Allotments - Orchard Group | 11-12 |
| Art Trail Special - 4 page pull out and map | 13-16 |
| Lower Thames Rowing Club | 17 |
| Leigh Folk Festival | 18 |
| Colouring Competition | 19 |
| Letters | 20 |
| Leigh Operatic & Dramatic Society | 21 |
| Local Businesses | 22-23 |
| Two Tree Island | 24 |
| Heritage Trail & Family History | 24-25 |
| Homelessness | 26 |
| Leigh Fire Station | 26 |
| The Royal British Legion | 27 |

From year to year the Community Centre grows from strength to strength becoming one of the Town's most beloved destinations and a hub of Community Activity. The Centre is available to be hired by anyone for almost anything, whether you want to run your own class, hold a meeting or throw a party, our affordable rates and friendly staff make us the venue of choice.



Easter Activities

The Centre played host to a range of fun activities for little one's during this year's Easter break. Children could take part in Arts & Crafts with The Art Ministry, a Spring Planting Session with South Essex Organic Gardeners and an animal handling session to feed lambs and hold baby chicks and rabbits with J&C Party Pets. Entertainers also got involved with a Marko Sparko magic show, Punch & Judy, Tiny Tales Storytelling and an Inflatable Fun Day with Jolly Kids Castles. As always our events are incredibly popular and we thank everyone involved!

Book, Music and Film Fair

Our 3rd Fair was held at the Centre on 25th March, plenty of residents popped in to find a bargain. Over 25 stalls came along to the centre to take part with £145.61 being raised for a Community Centre project.

Band Nights

Our popular band nights organised by Lorna & Lottie's Café are a great night out with the Centre's large hall being utilised by groups such as Goldmaster Allstars, Dirty Water, and Famous Potatoes. Events are held regularly throughout the year with a well stocked bar and meals available. Tickets can be bought in advance at the Centre reception or are available on the door. Come along to our Christmas gig being held on 23rd December with Stud 100 and the Beautiful People.

Southend Carnival Beer Festival

For the third year running the Community Centre will play host to Southend Carnival's Beer Festival. Met with incredible popularity over the last two years this year promises



to be just as much fun with a variety of live music acts and a huge range of beers and ales to try out. All proceeds go to the Southend Carnival Association. The Festival will take place over 3 days on 11th August until 13th August and more details will be publicised nearer the dates.

Leigh Lights Pre-Parade Fun

This year the Centre will be welcoming back their children's Pre-Parade Activities at the Community Centre before the Leigh Lights. A range of festive fun with arts and crafts, storytelling and more will take place from 4pm on 24th November.

Children's Parties

Organising a party at home for your little treasures can be stressful if you don't have enough space, why not book to have their party at Leigh Community Centre? We have several large rooms which can accommodate large groups of children as well as our large hall which is perfect for bouncy castles or soft play! The car park at the back of the centre is also free on a Sunday. We allow you to bring your own food and treats for the little ones and take the hassle out of amusing the children with a party entertainer! Rooms are available at the weekend from £19 an hour, and our friendly staff will be available to set up any tables and chairs you require before your arrival.



Why not choose us to host a fundraising night for your charity, we are available to hire for Quiz Nights, Race Nights, Band Nights and more!

Children's Activities

The Centre has an ongoing programme to provide affordable events throughout the School Holidays. We aim to deliver a variety of activities to cater for different interests and ages. Due to their popularity tickets are sold in advance at the Centre. Parents can join our mailing list to ensure they never miss out on an event by emailing enquiries@leighcommunitycentre.com. Keep an eye out on our Facebook page to find out about our upcoming Summer activities.

CFC Report 2016-17

Another year for the community facilities committee has passed. The members of this committee work hard to look after the physical property of the Council, the Community Centre, sea front shelter, Strand Wharf, Skate Park etc.. It is interesting, sometimes fun but always a lot of work which the members carry out as unpaid volunteers on your behalf.

Strand Wharf is finished and open and is proving popular with all. It is unbelievable looking at the before photographs to see just how much the area has improved. You can now see for the first time in years the heritage of this part of Old Leigh in all it's glory. We hope you like it.

Moving forward we have new projects being planned. A leisure area and refurbishment of the skate park down at Leigh Marshes, and the refurbishment of the Community Centre.

At Leigh Marshes we are working towards opening up the area to the south of the road leading to Two Tree Island for sustainable leisure, picnic areas, an adventure trail, BMX track for instance. All suitably low key and fitting in with the natural surroundings. We need your help, we need your input, we need you to tell us the sort of things you feel would fit in there and what you would like to see and use.

With the Community Centre it is the same. Usage wise it has become very busy and at peak times; ie. most of the week, we are virtually full. The Centre puts on a program of events which are also proving popular such as school holiday events for the younger ones and a beer festival for the older ones. Also regular band nights are becoming a feature.

More and more people are using the Community Centre for their weddings, celebrations and parties. BUT, we have a long list of essential repairs, some such as the roof really quite expensive. We also need to prepare the Centre for the future by refurbishing and improving areas where this will be of benefit. Again we need your ideas and input. It is your Community Centre so we need to hear from you.

We are all working as hard as we can to provide you in Leigh with those extras which make Leigh such a special place to live. We need to hear from you so please let us know what you think and what ideas you might have for the future. This is your Council.

Richard Herbert
Chairman

Environment and Leisure Committee

Since the last edition we have had The Night of the Lights, once again enjoyed by many people, both Leigh folk and our welcome visitors. This was followed by our traditional Carols on Strand Wharf where the weather was not so kind to us this year but still drew a good crowd. Many thanks to the Salvation Army, Belfairs Choir and Carol Bastin for leading the singing. Also a big thank you for the generous donations of mince pies.

Looking ahead to the summer, for a change this year we plan some smaller events with a Summer Season on Strand Wharf instead of the Maritime Festival. This will help to reduce the disruption to the residents and businesses of the Old Town by not requiring a road closure. So 9th July will see the Wharf transformed into a Piazza with the Italian Market, 16th July there will be a Seaside Concert. On 30th July we will join in with Leigh Lions Duck Race event and have Kids' Zone activities on the Wharf and finally on 6th August we will be collaborating with the Lower Thames Rowing Club for their annual pier race and with The Leigh Society to provide heritage and marine exhibits on the Wharf as well as having the Thames Sailing Barge Pudge moored alongside Victoria Wharf. So much to look forward to.



Sadly with the retirement of our Community Transport Officer we have had to suspend the outings for our older residents but hope to have a new programme in place soon. In the meantime following on from the success of our 90 for 90 Tea Party last year we hope to arrange another Tea Party this summer for the 'over 65s', further details to follow.

Our Allotment Sites continue to flourish and I am sure you will read reports elsewhere in this edition.

On an environmental note we, along with Leigh Lions, joined with Southend Borough Council's Make Southend Sparkle initiative litter picking on Belton Hills. We will also be helping to clear the Thames Coastal Path behind Leigh Station on Easter Saturday and hope to continue trying to keep our open areas clean through out the year. A big hope I know.

Finally, a big thank you to our staff in the office without whom none of our events could happen.

Valerie Morgan
Chairman

Policy and Resources Committee Report 2016-17

I'm pleased to report that Leigh Town Council have obtained Foundation status and going for Quality Council status thanks to the work of the Town Clerk and office staff. With the recent appointment of our new Town Clerk we have reviewed staffing needs and are undergoing a significant restructure to future proof the Council resulting in cost reductions. A new website is being launched as part of our aim to communicate more effectively, keeping everyone up to date with what we are doing and what is on offer.

We continue to develop the forward planning of each committee's activities through the Action Plan framework. This formality matches aims and objectives with those of the Council's core strategy. Value for money and working more closely with the community are the focus. This has held the increase in the precept to a very modest level.

Strand Wharf has now become an asset and focal point in the Old Town as well as hosting Town Council and other events. Our thoughts on a leisure area near the Skate Park will continue to be investigated and we are looking to upgrade the Skate Park itself. Discussion will continue on how to develop such community leisure provision in the future. Bonchurch Gym is proving popular in helping to improve the fitness levels of local residents.

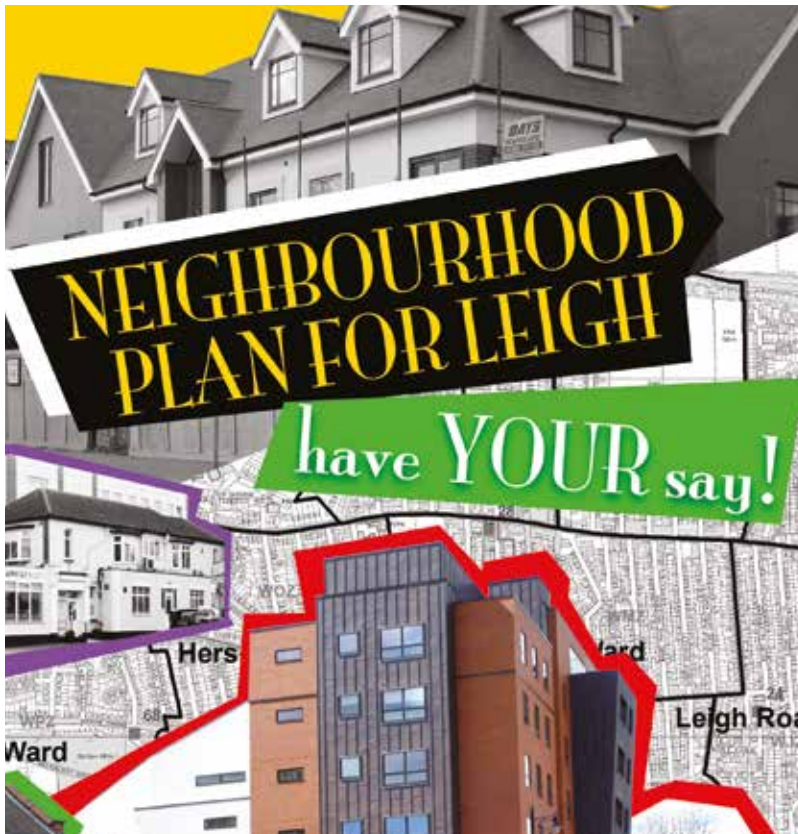
Leigh Town Council News has proved a useful and informative vehicle in keeping the Leigh community informed about the activities and spending of the Council as well as introducing articles on local independent traders. The Farmers' Market and Community Transport scheme have both been publicised as have Community Centre activities. Our allotments and the orchard regularly feature, showing the hard work that goes into running and maintaining these facilities by the Council working with the Societies involved.

The Council has run a series of in-house workshops for LTC members towards development of a Neighbourhood Plan for Leigh. This could form part of SBC Local Plan and hopefully will ensure we give a voice to the number of specific issues affecting Leigh residents and businesses.

The Neighbourhood Plan is a national programme and we are following NALC guidance on developing this. Once we have a clear set of objectives we will consult widely with the people of Leigh in order to ensure we are focussing on the voice and needs for Leigh present and long term future. Some of our concerns are the threat to bungalows and over development of new proposals which would replace them. This can impact hugely on parking stress in many streets as driveways increase while street parking becomes limited. Another issue is the increasing number of applications for blocks of flats and related infrastructure and parking concerns. The question is... what do we wish to protect and preserve and what needs to be developed given changes in population and demographics? We need the people of Leigh to get involved in the development of our Neighbourhood Plan as it evolves.

We have approved a number of Grant Aid awards to Leigh Folk Festival, Leigh Art Trail, 3rd Chalkwall Bay Scouts and the local Tourettes organisation.

Jane Ward
Chair of P&R Committee



Antisocial behaviour hits The Broadway

Leigh loses another historic building

Long running saga over vacant shops

Litter plagues Leigh streets

Speeding traffic turns Leigh into a Grand Prix

Sound familiar?

Now there is an opportunity to express your opinion instead of reading more headlines like this.

Planning, Highways & Licensing Committee Report

Report for the year to 31 March 2017.

The Committee met 25 times, usually on the second and fourth Tuesdays of each month.

As a statutory consultee of Southend Borough Council we considered 286 applications in respect of proposed developments within the Town Council area.

We noted an increase in applications to convert garages, conservatories and roof spaces into habitable accommodation.

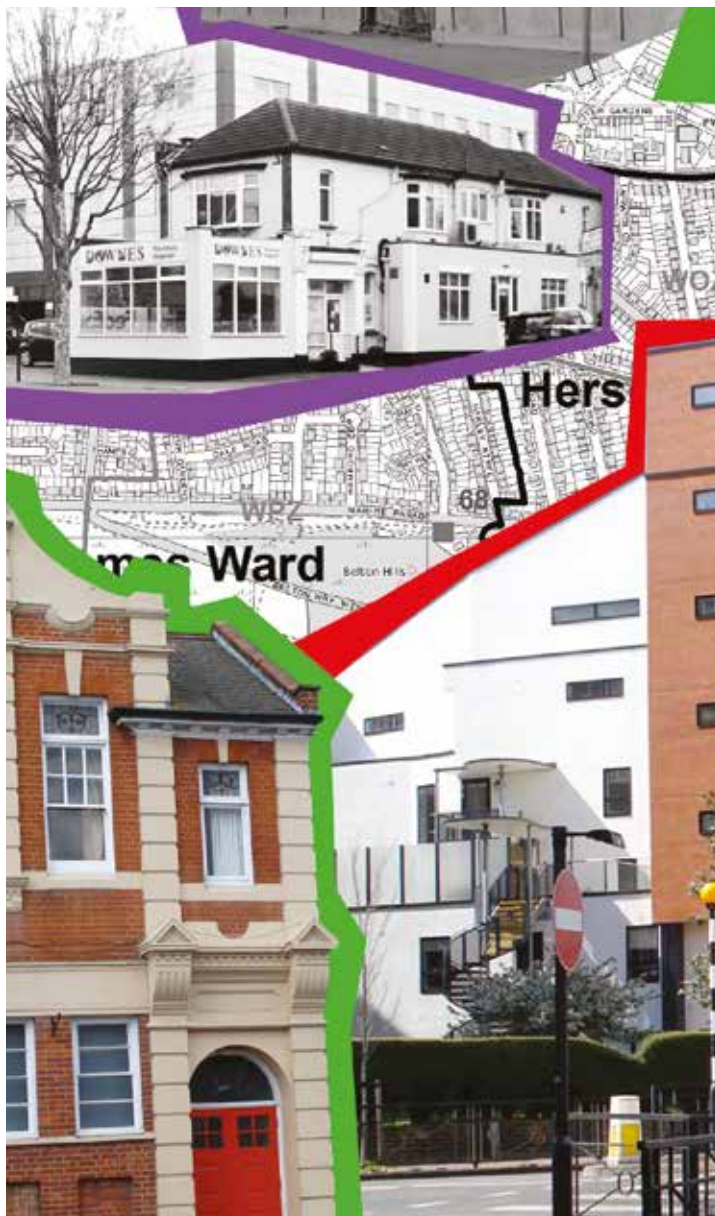
In addition we dealt with 5 Licensing applications, consultation on 9 Highways matters and one consultation on the Borough's Gambling Policy.

Community Transport Annual Report

With a membership of some 150 older people, the Community Transport scheme offered an outing on an average of once each month during the year to 31st March 2017.

The outings were to It Runs in the Family, Made in Dagenham, Plaza Classical Concerts (twice), Ingatestone Hall and Gardens, Hyde Hall Flower Show, Swan Lake ballet, Jekyll & Hyde Musical, Alton Garden Centre, Christmas Lunch at the Sarah Moore and Dirty Rotten Scoundrels.

Donald N. Fraser



Leigh Town Council has started work on a Neighbourhood Plan for Leigh residents to have more of a say on:

Identity... How the town will change over time

Heritage... What needs to be protected and what needs to change

People... The Town Council believes that Leigh people know best what local needs are and how they should be met.

Challenges facing the town include an increasing population with younger families; over development that is stretching local transport, schools and health facilities; local businesses being replaced by national chains; lack of activities and services for teenagers.

Already Leigh Town Council is:

- Liaising with Southend Borough Council on behalf of the people of Leigh
- Providing information and services to the public
- Supporting local businesses and the economy
- Facilitating connections between people and groups
- Encouraging interest and participation in local arts and leisure activities
- Protecting and enhancing local assets
- Co-ordinating and staging community events

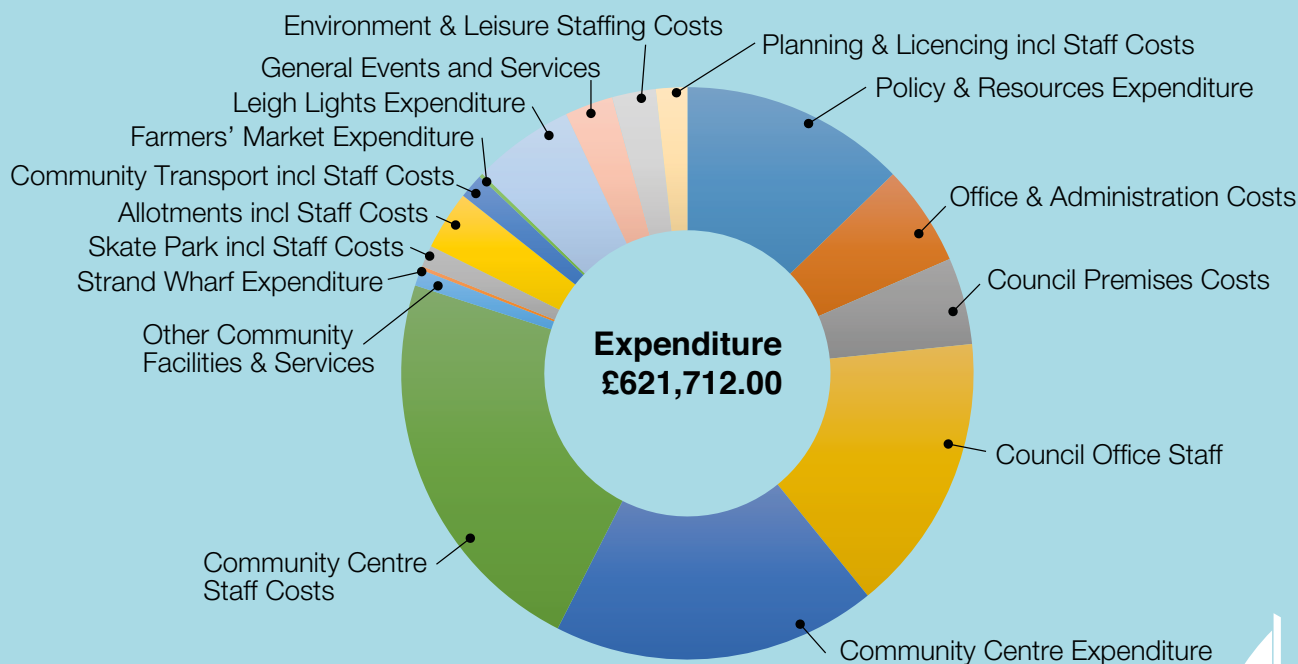
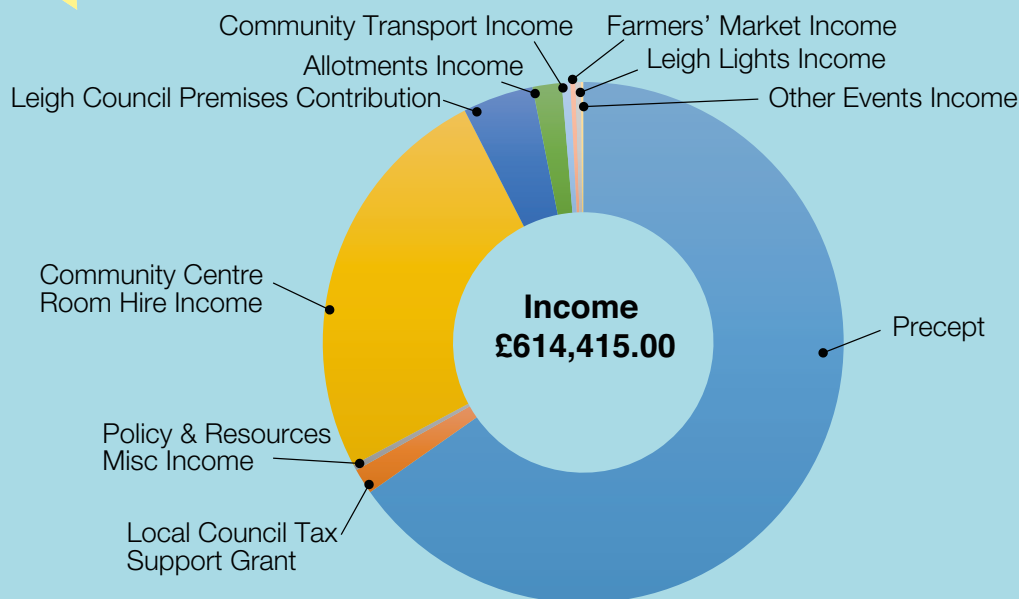
The Neighbourhood Plan means that Leigh residents can come together with the Town Council to shape the future of the Leigh area.

The Town Council will be asking Leigh residents, local businesses and organisations for their views on:

- The strengths and positive features of Leigh (things that people value and want to keep)
- Things that Leigh does not have that it might like
- The negative features of Leigh (things that people do not like and would like to get rid of or improve)

If you would like to know more and/or express your view, get in touch: council@leighonseatowncouncil.gov.uk

Leigh on Sea Town Council 2017/18 Budget





Mary Lister:
Artist in Residence
2016-2017

Art Classes at the community centre

If you are interested in art and especially art that is fresh and current the community of Leigh is a great place to find it. The Broadway is filled with galleries and some of the bars and shops host artists in the Leigh art trail... so I thought why not, let's start a contemporary art class here in Leigh.

The Contemporary Art Class has now reached its two year milestone and has exhibited work at the centre. This was to display some of the amazing work produced during this time. I am so proud of everyone who has participated in this class and especially those who took part in the exhibition. I remember when a blank piece of paper created feelings of fear and uncertainty for some, but have seen the change into a group of confident artists which is really wonderful. The class is really for anyone who has an interest in art and those who have an open mind to the ever changing world of art. It is a great place to meet people and the social aspect has been great; many have developed new friendships as have I. We have practised a wide variety of artistic techniques from silk screen printing to plaster carving and we still have many more fresh ideas to try.

Since teaching this art class in Leigh I have witnessed the prolific artistic potential of local people.

I must congratulate the art class on their exhibition and thank the Community Centre for hosting it. Everyone keep creating and keep Leigh an arty delight!

Calling local artists and art groups ... two fantastic opportunities

Are you an artist, crafts person, designer?

Leigh Town Council is excited to invite applications for our next Artist in Residence – could it be you?

If you are an established practitioner and might enjoy developing a community project or similar then the Loft space in the Community Centre is just for you. To find out more please collect the information pack available at the Community Centre reception.

Interviews will take place during August and the successful applicant will commence his/her residency in September 2017. It's a big space so joint applications will also be considered.



Yes to Nudes!

An Exhibition of Life Drawings

Leigh Community Centre, in the stairwell and hallway upstairs
71-73 Elm Road, SS9 1SP

Talent on show... Community Centre Art Wall

The Leigh Community Centre Art Wall now hosts regular art exhibitions of work from local artists and art groups. Three successful exhibitions have been staged since the last newsletter – Lisa Meehan's print making group, Susan Allen's life drawing group and Mary Lister's contemporary art group.

The Art Wall is open to individual artists and art groups who have sufficient pieces of work to fill the space. There is no charge but applications are subject to the Community Centre's Terms and Conditions.

Interested? Request an application form from the Community Centre reception. Artists and groups with a connection to the Leigh area – residing, meeting or working in the locality – will be given priority.

The Artist in Residence and Art Wall initiatives are part of Leigh Town Council's commitment to promote the provision of accessible social, recreational, educational and cultural facilities within the town for the benefit of the community and visitors.



Marshall Close Allotments... Small but Beautiful!



Marshall Close allotments is the smallest allotment site in Leigh on Sea. The site on Highlands Estate, has been there many years, but the Marshall Close Allotments Association (MCAA) was formed in December 2015, to run the site on a day to day basis for LTC.

Since the formation, a lot of work has taken place in cleaning up the site, and making it a tidy and friendly place to garden in. The site has no road access, so all paths are grass which we maintain ourselves. Any other maintenance is undertaken by committee members or when we have volunteer working parties for specific jobs.

We have only 23 plots and they are smaller than the plots on the other LTC sites. All plots are currently taken, and being worked well, and we have a waiting list for plots when they become available. Although we are small we provide tea and coffee making facilities on site, and we now have 2 social functions each year, a BBQ in the summer, and a bonfire party around 5th November.

Recent work has involved planting some communal apple trees, and creating a small wild flower area to attract pollinators. The site is very sheltered and temperatures are always a few degrees higher on site than the surrounding streets.

Whilst we have good volume of "spuds and cabbages" grown we also have plot holders who take advantage of Leigh's mild climate to grow more exotic produce. Last year saw Artichokes, Sweetcorn, Fennel, Celery, Asparagus, Pumpkins, Borlotti Beans, and Chilli Peppers grown, it's great to experiment with new varieties of fruit and vegetables.



MDAS is a thriving allotment site in Leigh. We have won the best allotment site in Southend for several years. One of our plot holders has also won best plot for many years. We have just over 200 plots which are nearly all cultivated from residents in Leigh. The plot used to belong to Bentalls farm and had the nickname of "Hungry Acres" and it lives up to its name. It is always hungry for plenty of manure and nutrients.

We have on site a club room, a café and shop which are open every Saturday and Sunday between 10-12 during the season.

We have a big project in the offing which is to build a new café, change the shop and pull down the existing shop and café which are getting old. By doing this we wish to open up the space so that we can have a patio area with trees and shrubs to make a more comfortable environment for those who enjoy sitting outside to enjoy their tea and bacon sarnies.

We invite any member of the Leigh Horticultural Society to enjoy these facilities with us



Leigh Allotments Orchard Group

David Hammond

The last few months have been quiet on the orchard with the trees taking their winter rest, and this year they have not had to put up with being flooded: this happens if we have a wet winter but this year was fairly dry.



The pear trees came into flower during the last week in March and the apples will follow suit as we progress through April and May. One of the first apple trees to come into bloom will be Discovery and Discovery apples should be one of the first new season's apples to appear in the shops in August. This variety had an inauspicious start having been raised by a Mr Dummer at Langham, north of Colchester in 1949. He had raised several seedlings from Worcester Pearmain pips and this one he decided to plant in his front garden but having only one arm he enlisted his wife's help but she slipped and broke her ankle. In spite of leaving the sapling for several weeks covered with a sack to protect it from frosts it survived and eventually produced heavy crops and was taken up by a Mr Matthews who introduced it commercially in the 1980s. Our tree regularly produces a large, fine crop of apples.

Most other Essex varieties had a much less traumatic start in life, a good proportion of them being produced in an ordered progression by Seabrooks of Boreham, particularly in the 1920s and 1930s, a company sadly no longer in apple production.

Most of our trees seem to be in good condition and if we do not suffer from hard frosts in the next few weeks they should produce good crops again this year.

If you would like to join the group looking after the orchard contact can be made through Leigh Town Council.

Leigh's well-known Art Trail is celebrating its twentieth year -



Writer, Sophie Sleigh-Johnson and current Chairperson, Bronwyn Oldham, look back on the past 20 years and what we can expect in the next twenty.

Back in 1997, there was not a great deal in place to unify the town's disparate creatives. When asked why they went up to town for any 'culture,' residents would reply that there was nothing going on in Leigh. How wrong they were! For not only was this little corner of Essex, home to many amateur artists, but a newer wave of art-school educated residents were looking for ways to develop and expand the roles of the arts and their access in Leigh.

Richard Baxter, one of the pioneers of the Trail and long-time studio resident of Old Leigh Studios, said:

"We wanted East Anglia to be a force to be reckoned with!" And why not? Towns like St. Ives, for example, have been well-established as a seaside-based centre of artistic production. And it could be said that Leigh and Southend have the lead in trailblazing creativity in the arts and music scene over the twentieth century.

With this in mind, Richard, along with local artist Peter Eden, started to build on the development of an Art Trail. Peter remembers, "Richard and I had always been talking about this. And I'd seen a small art fair and thought "We could do that in Leigh!" Peter had a shop on Station Road in Leigh, and the idea of putting artwork in local businesses for a week long exhibition was sprung. He continues: "People didn't like the idea of going into galleries, but going into a shop was more relaxed." Others involved in the trail's early development included Howard Robinson, as well as Jonathan Trim and John Adams, all of whom continue to participate in the trail to this day.

Using Richard's notion that Leigh was a bit like "St Ives of East Anglia", as a kind of tongue-in-cheek catch all term that caught on, the plan progressed. Peter explains how Leigh was ripe for this idea:

"Leigh and its history has always been involved in the arts, and had painters like John Wonnacott, Tony Farrell and Peter Smith too, and we wanted something to reflect this." Richard and Peter decided to look for other like-minded people to set up a committee. "It became a spider network of artists," said Richard. "We ended up with 35 people, but we started from scratch!" It was always to be a collective effort, and Peter explains: "it was to be run by the artists themselves. Everybody that took part did it in a supportive way, and the artists used to find their own shops to exhibit in."

Further, the original ingenuity of developing the first Art Trail in the area was a sign of the resourcefulness of the town, and there was no reason why Leigh's Art Trail should not now go on to break the mould for how and what local Art Trails show and engage in. It is clear that the original Art Trail had a key role to play in the development in having made Leigh and the wider Borough so key in national art. Peter Eden states that he is "very proud" of what the Trail started off, and how pleased he is that "the Art Trail is so progressive!" The legacy of the Trail is that there are now over 25 Art Trails in Essex, proof of its importance in defining a cultural shift. It is testament to the hard work and community focus and entrepreneurial nature of the initial few that had the idea, who can rightly take the credit for putting Leigh on the map of the national art scene.

Twenty years on and the trail is still going strong, continuing to celebrate the vast amount of creativity in the town, "Looking back, the past twenty years have been really great," says Bronwyn Oldham, the current Chairperson of the trail. "However, I'm now keen to see it move to the next level, to include more contemporary and thought provoking art works, as well as reach and engage an even wider audience."

Working alongside Bronwyn, local artists Emma Bell, Amy Kirkwood and Tricia North are also Directors, assisted with the invaluable on-going support of fellow Director and Treasurer, David Osborn from Clouders. Despite having grown and expanded, it still remains a voluntary and not-for-profit organisation with the same core values of promoting the artistic talents of Leigh's community. They are currently self-financing through artists' subscription fees, commissions

PULL OUT THIS MAP

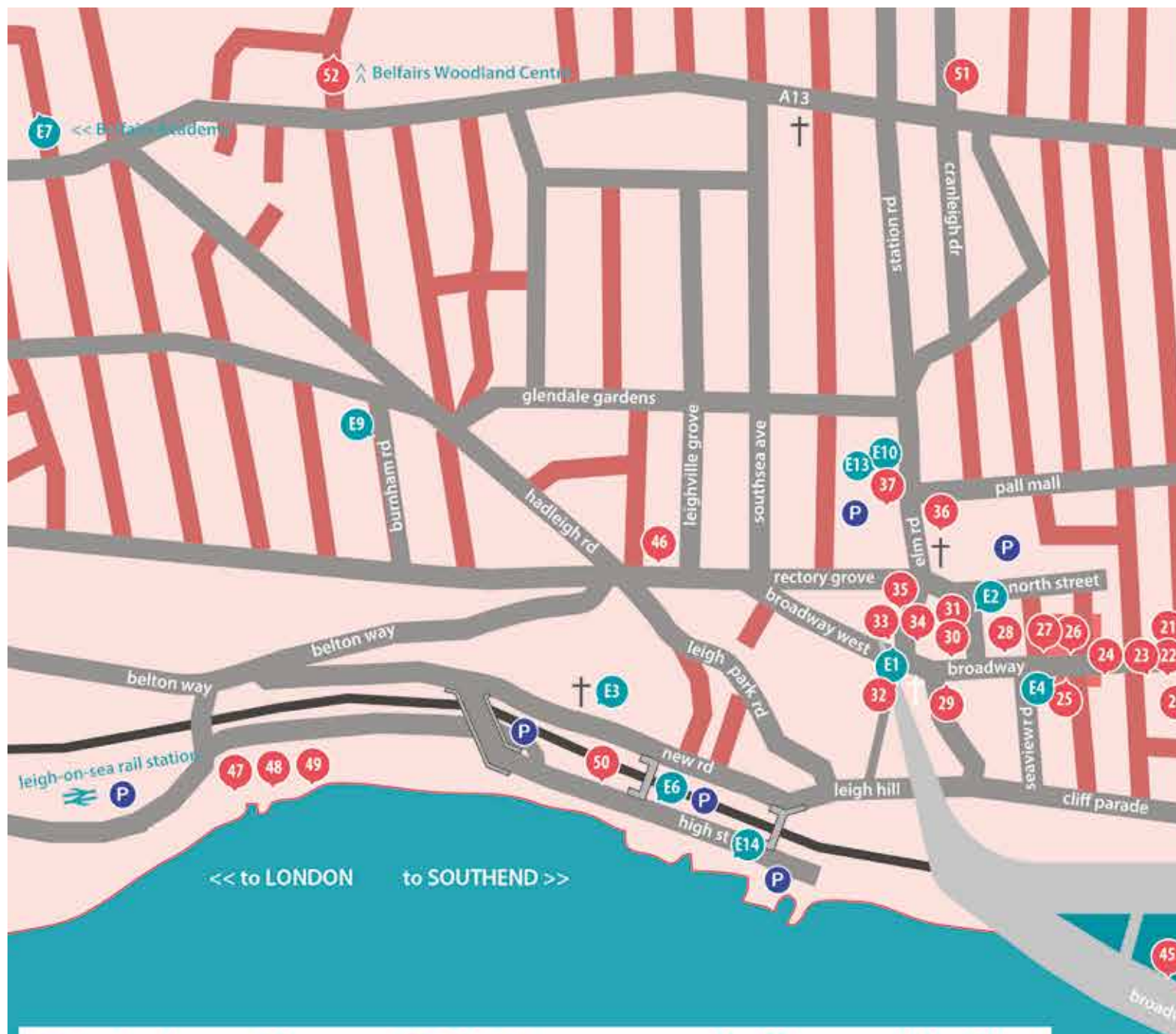
on artists' sales and a grant aid award from Leigh Town Council. Bronwyn is set on strengthening the remit of the trail, explaining: "Selection takes place very early in the year and we have expanded entrants to include artists in the whole of the SS postcode, not just SS9." By steering the Trail in the direction of contemporary art, as well as continuing to support and showcase its core stable of local artists she hopes the trail will continue to thrive and continue for the next twenty years.

Returning after a 12-year hiatus, the much enjoyed Sculpture Street will be taking over West Street, just off Leigh Broadway, again into a street of visual inspiration for the first weekend of the trail. Organiser Andrew Haines, responsible for creating this community event, put an open call out to local artists to create a sculpture/installation to exhibit in a garden along the street, by asking the question "What's in your front garden?" The works promise to be eclectic as well as wide ranging in its attempt how the residents of a street can come together in visual unity. Full details of the artists taking part, including times etc. are on their website, www.sculpturestreet.co.uk

There will be plenty of opportunity for community participation during this year's landmark anniversary. Local schools will be making artworks to be exhibited, and there will be a launch event as well as many other activities including guided walks, performances and artist led workshops.

For full details of this year's Art Trail, which runs from June 10th to 17th, be sure to check their website at www.leigharttrail.com, where you can also find details about how to apply for next year's trail.

Adapted from an article originally published in The Leigh Times Spring 2017 Magazine.



Celebrating 20 Years of Creativity



Sat 10th - Sat 17th June

OVER 80 ARTISTS, IN 50 VENUES, ACROSS 8 TOWNS

WWW.LEIGHARTTRAIL.COM



Southend adult
community college
The Beacon College of Southend

Cloud
www.cloudevents.com



Sculpture Street, Sat 10 & Sun 11 June www.sculpturestreet.co.uk

For further events please visit website or pick up a guide. Details correct at time of go



ne

DAYS



ers

rs.co.uk

et.co.uk

ing to press.

1. **Katrina Parris** Textiles
2. **Nicola Parry** Photographer - New
3. **SEVEN** Creative Sketchbook Collective - New
4. **Paul Alcock** Painter
5. **Si Brandon** Photographer
6. **Kathryn Eleanor (Thorne)** Illustrator - New
7. **Zoë Howe** Collage
8. **Rowena Wright** Visual Artist/Sculptor - New
9. **Simon Ambrose** Illustrator - New
10. **Emma Mower** Mixed Media
11. **miss annabel dee*** Ceramic Artist
11. **Julie O'Sullivan** Ceramicist
12. **Denise Jacques** Mosaic - Guest Artist
13. **Wendy Scotland** Sculptor & Mixed Media
14. **Thomas Staples** Painter

15. **Simon Feather** Painter *no access*
15. **Tessa Frampton** Painter *no access*
15. **Tricia North** Mixed Media *no access*
16. **Amy Kirkwood** Colourist *no access*
16. **David Shields** Photographer *no access*
16. **Eddie Bacon** Photographer & Videographer - Guest
16. **Jan Simon** Fine Silver Jeweller *no access*
16. **Lola Swain** Potter *no access*
17. **Howard Robinson** Contemporary Painter
18. **Jonathan Trim** Painter
19. **Atelier Artists** Guest Group
20. **Jane Martin** Sculptor/Painter
21. **Karen Hamer** Ceramicist
22. **Emma Bell** Painter
22. **Francesca Vendramin** Ceramicist - New
22. **Georgie Millard** Embroiderer
22. **Mina Sabri-Tabrizi** Illustrator
23. **Mark Taylor** Photographer
24. **Victoria Sills** Mixed Media/Textiles - New
25. **Natasha Kamburova** Fine Art
26. **Nicola Trevena** Painter, Draughtsman, Ceramicist
27. **Kerry Doyland** Painter & Drawer From Life
28. **Catie Beck** Ceramicist - New
29. **Dominic Mylroie** Illustrator
30. **Kitty Oakley** Print Maker - New
31. **Alex Keefe** Photographer - New
32. **John Adams** Mixed Media
33. **Claire Bartlett** Visual Artist - New
34. **WOFT** Portrait - Guest
35. **Alison Bournes** Mixed Media Sculpture & Printmaking
36. **David Crawford** Painter
37. **Mary Lister** Sculptor - Current LTC Artist in Residence
37. **OPEN ARTS** Guest Community Group
37. **Brad Harris** Painter
37. **Project 49** Guest Community Group of Photographers
38. **Yu Lan Burkmar** Jeweller
39. **Bronwyn Oldham** Fine Art Photographer
39. **Susan Allen** Fine Artist
40. **Lisa Castle** Jeweller
40. **Nathan Martin** Illustration
41. **Joanne Holbrook** Illustrator/Graphic Designer
42. **Ian Segrave** Painter - New
43. **Mark Massey** Photographer - New
43. **Shelley Jupitus** Print - Guest Artist
44. **Julia Hart** Mixed Media Artist - SACC Winner
45. **Emma Emmerton** Photographic Printmaker
46. **Daniel Waddington** Jeweller & Metal Artist - New
47. **Hanman Murphy** Ceramicist & Sculptor
48. **Amanda Jackson** Painter - New
48. **Ian James** Photographer
49. **Sandra Ehlers** Mixed Media
49. **Eloise Holmes** Weaver - Guest
50. **Ian E Smith** Painter
50. **Richard Baxter** Ceramicist
50. **Sheila Appleton** Painter
51. **Andrew S. Hall** Painter
52. **Andy Rose** Photographer
52. **Paula Puncher** Photographer

**PULL OUT
THIS MAP**

The Leigh Art Trail Silent Auction

10am Saturday 10 June until
2pm on Saturday 17 June

The Leigh Art Trail is 20 this year and as part of the celebrations we are planning a number of events to make it just that little bit special, while also helping to raise the profile of the Trail for the visiting public. With this in mind we are taking a different approach for the annual Art Trail Auction.

Rather than holding a separate event later in the year, we are incorporating it into the Trail itself by holding a 'silent auction' over the 8 days. The idea is that each artist displays a piece of their work to be auctioned. But, instead of having one central location where all the work will be displayed and auctioned off, it will be exhibited in their own venue.

Any visitor who wants to place a 'silent bid' on a piece of work, simply fills out the form with their details and their bid and puts it in the boxes provided. The auction lasts all week with the winning bidder being the highest bidder after the auction has closed on the last Saturday of the trail at 2pm. The winner will be contacted and arrangements made for collection and payment. Where there is more than one winning bid, the names will be put into a hat and one winner pulled out.

The silent auction will be advertised in the Art Trail brochure, on social media and the website. The Art Trail will also be making a donation from the auction proceeds to a local charity/organisation that specialises in supporting individuals living with dementia through the arts.





Why not try something new?



Our region has some beautiful countryside to explore. But as far as the Estuary, most don't venture far beyond the beach. Have you ever considered taking to the open water, but the thought seemed a daunting and costly prospect?

There is a thriving coastal rowing club within your community, with experienced enthusiasts, who can help you achieve this ambition, safely and affordably.

As a member of The Lower Thames Rowing Club, you could have access to a number of fixed seat vessels that regularly launch from Two Tree Island.

Look out into the Estuary on a Saturday morning and you will, in all likelihood, witness our crews heading out on a new adventure.

From our club's inception in 2002, we've been going from strength to strength. As well as regularly training and enjoying more sedate Social Rows in our home waters, we successfully compete in races with other clubs throughout the South East.

We are also the largest touring rowing club in the country and explore waterways throughout the UK and Europe on our Adventure Row Excursions.

We are always looking to welcome new crew mates to share in our endeavours. We pride ourselves on our inclusivity and aim to cater to all sections of the community. It is a wonderful sporting activity that will keep you fit and active, and open up a whole new aspect of the great outdoors to you. As well as being fantastic value for money.

So take advantage of our FREE Learn to Row Programme with our experienced Duty Officers.

Visit www.lowerthamesrowingclub.co.uk or contact info@lowerthamesrowingclub.co.uk.

Life's an
Adventure,
Join Ours.



More Mud than Glastonbury!



Taking place across a swathe of indoor and outdoor venues in public spaces around Leigh on Sea, our much-loved event is now unchallenged as the largest free folk festival in the country.

The date for the diary for this year is: Thursday, June 22nd- Sunday 25th 2017.

Leigh Folk Festival began as a one day event back in 1992 as the National Music Day, a dream instigated by none other than Rolling Stone, Mick Jagger and Tim Renton, MP, the Arts Minister at the time.

Over the past 26 years Leigh's little soiree has grown and grown. Now boasting a four-day event with more stages and more venues clamouring to support a refreshingly diverse and eclectic programme of music; concerts and ceilidhs; an open mic competition; busking; dance displays; story-telling and poetry; art, film and street theatre; children's activities and workshops plus a centre-piece procession on the Sunday, the Leigh Folk Festival has rightly earned a reputation as the "little GEM" in Southend's busy itinerary of entertainment.

At its best, music has the power to make us all feel part of something bigger than ourselves, while nurturing a true sense of community and local pride. From the local, pastoral fete atmosphere of Leigh's delightful Library Gardens on the Saturday to the buzzing, bustling cobbles of the Old Town's Cockling village on the Sunday.

What is amazing about the continued pull and success of Leigh's Folk Festival is:

- the whole event is planned, organised and run by unpaid volunteers;
- all the local bands, dance groups involved give their time and talent free of charge;
- virtually all the entertainment on view is FREE to the wandering punter;
- we have MORE mud than Glastonbury but we keep it the right side of the sea wall!

Today, everyone seems to have a different take on what constitutes "folk", "roots" or "acoustic" music. Reflecting the diversity of its audience, the Leigh Folk Festival has gained a deserved reputation for imaginative "broad church" programming, taking-in the traditional and the alternative, the local and the international, the obscure and the celebrated then bringing these diverse strands together over the weekend.

Rather than drifting towards becoming another commercially driven, ticketed event, the team of dedicated volunteer organisers has doggedly held fast to the original grass-roots access-for-all ethos – and, so, the festival retains its unique, eclectic and idiosyncratic atmosphere!

As a FREE Festival, the event can only survive year by year due to the generosity of YOU, the good old general public with the pennies you put into the red collecting tins at each year's Festival.

So, in order to make the 26th year a real BONANZA and to attract some top performers to celebrate OUR special "little GEM" we need your support.

Thank-you! As ever in music - Mickie D (Mick Davison), Chairman - Leigh Folk Festival

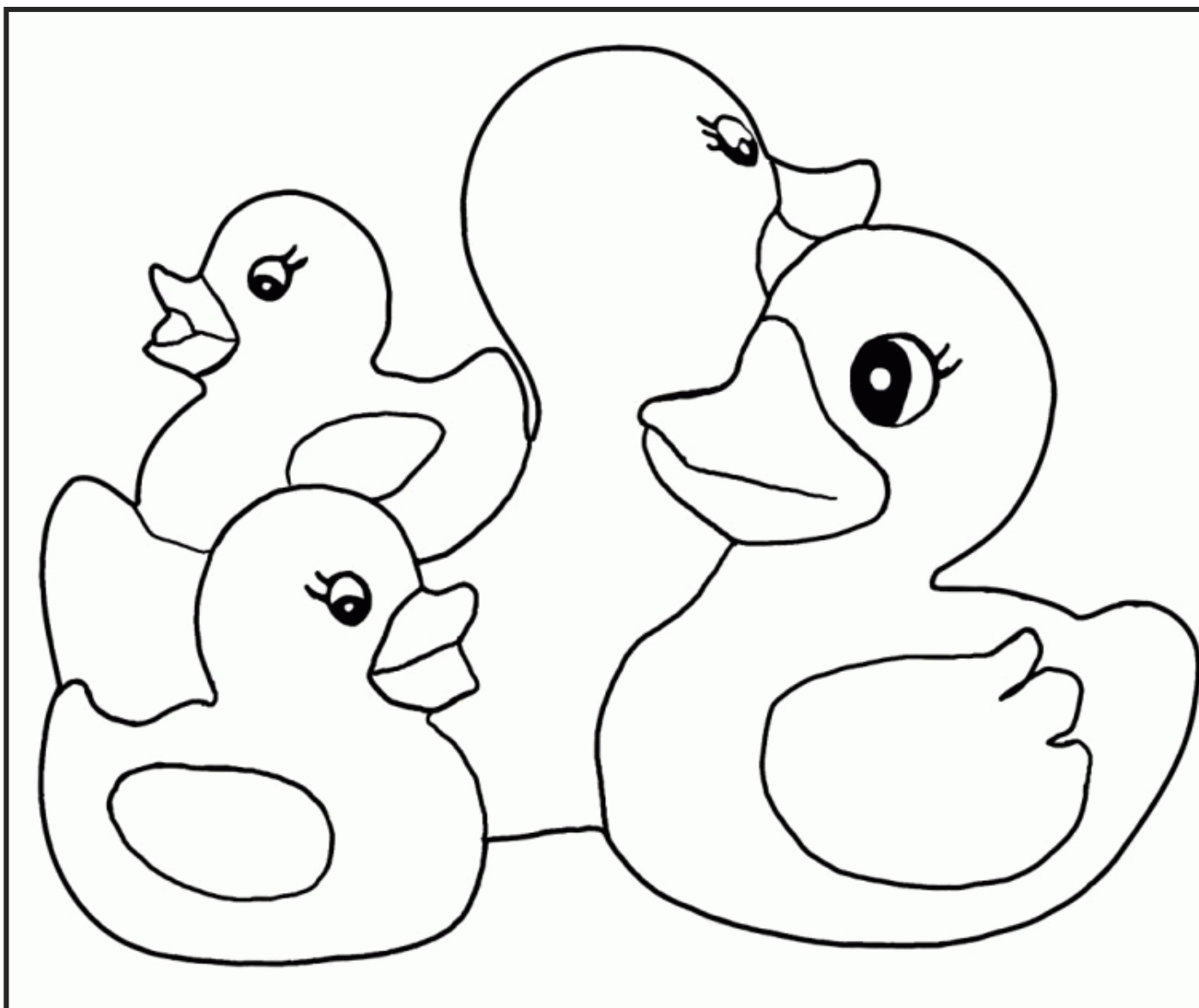


The Lions Club of Leigh on Sea - Annual Charity Duck Race.

30th July 2017 - Billet Wharf, Old Leigh



Children's Colouring Competition



Entries to be sent to Priority Management, 60 The Ridgeway, Westcliff on Sea, Essex. SS0 8NU

Entrant Name Age (Infant / Junior School please delete)

Address Tel:

Colouring Competition Terms and Conditions

Relatives of members of the Lions Club of Leigh on Sea shall not be permitted to enter the competition.

The competition will close on **1st July 2017**. Entries received after this date will not be entered into the competition.

One overall winner will be selected from each age group (Infant School and Junior School). One additional entry will be selected from each age group for the runner up prize.

The winners will be decided on Wednesday 12th July 2017 and contacted soon after.

1st Prize £15 voucher, 2nd Prize £10 voucher for each age group.

All media accepted but chalk or charcoal must be sealed with a fixative spray.

We may use your entry to promote the Duck Race in this and later years, or include it in marketing materials without credit or fee.

The promoter's decision in respect of all matters to do with the competition will be final and no correspondence will be entered into.

By entering this competition, an entrant is indicating his/her agreement to be bound by these terms and conditions.

LETTERS

Dear Councillor Ward,

Can we have our pavements back?

As a pedestrian I'm finding our pavements in Leigh increasingly difficult to use with many obstructions. It is now common practice for cars in side roads to be parked wheels-up on the kerb and quite often with at least half the footway and sometimes the whole of it blocked by a vehicle. In Pall Mall on the north side cars and vans regularly block the pavement, on one occasion I found an articulated lorry parked completely across the pavement and over the forecourt of one of the disused shops. Walk down the Broadway, Rectory Grove and Leigh Road every cafe has tables and chairs outside, no matter that sometimes half the footway is obstructed; quite often there are plants in pots as well. Open fronted shops put displays of goods well beyond what might be considered their forecourt. Then there are A boards which seem to proliferate week by week, I even saw a half size one on the corner of Broadway West and Elm Road placed right in the middle of the pavement. On windy days the boards often blow over so that anyone with poor eyesight can trip over them. Can nothing be done to make our pavements obstruction free? I believe at one time Southend Council was seeking to bring in a by-law making parking on the kerb illegal, has this been abandoned with the change of leadership of the Council?

Yours Sincerely

John

resident of Oakleigh Park Drive



A resident of Elms Ward rang me 19th May 2016 to raise the issue of parking at the junction of Cranleigh Drive and the London Road relating to the new Elmtree Lodge development.

He had contacted SBC and was given a reference Number from the highways dept. They said they would send an inspector to look at the problem but he was concerned that he had heard nothing back.

The concern was that cars were parking on the new footpath and the absence of yellow lines results in no action by parking wardens to ticket offenders. This was making the pavement unusable. Despite the resident doing his best to resolve this with SBC it became a cause for considerable frustration.

At this point Carole Mulroney spoke to the Borough learning that they were aware of this issue and had spoken to the manager of the new development

because apparently some other elderly residents were also having issues crossing on pavement scooters. SBC had also looked at the situation and considered what proposals would assist. Finally an order was made to paint double yellow lines on the area of concern. It went to LTC Planning and Highways committee meeting In December for comment, where this was approved to be confirmed by SBC in January.

I'm cataloguing this process as it may be useful in understanding just how long it can take to process what might appear a simple request or concern.

We have kept the resident informed and we are waiting patiently (or perhaps not) for yellow lines to appear. I think it might well result in celebration drinks when these lines are finally painted.

Jane Ward Cllr for Elms Ward

Leigh Operatic & Dramatic Society (LODS)



This year Leigh Operatic & Dramatic Society (LODS) is celebrating a centenary - 100 years of entertaining Southend audiences. Quite something.

It was formed in 1917 and within two years the Society's success and increased membership made it necessary to move from the original Clarke's College in London Road to more commodious premises at Elm Hall.

In 1922, after many sleepless nights and committee meetings, LODS decided to take the ambitious move to the Ambassador's Theatre in Tylers Avenue, opening with Gilbert & Sullivan's "The Gondoliers".

In 1932 a move to the first-class facilities at the Southend Hippodrome led to the production of "The New Moon" in 1934. That magnificent show was generally acknowledged as the finest amateur production ever given in the town and created a sensation upon its initial performance. The advent of the "talkies" necessitated a move to the New Palace Theatre, then back to the Ambassador's in 1936, but returning again to the Palace in 1938. Over the Second World War the Society had to scale down its productions but continued on by regularly giving first-rate revue type entertainment to the troops around the county.

The first post-war production was "Wild Violets" at the Palace in 1946.

LODS have a record that they feel justly proud of. They have presented shows ranging from grand opera to the avant-garde (including three world amateur premieres) as well as countless entertainments for charitable organisations.

Today LODS continues this tradition, always ready to take a risk in order to offer something new, something exciting, but above all something entertaining and in this 100th year they will be presenting three productions that celebrate and reflect all that LODS is about.

Comedy and Character Last month they produced a brand new British musical, Betty Blue Eyes. Written by Stiles and Drewe this new wonderful show which was based on Alan Bennett's film 'A Private Function'. Set in 1947 it featured chaos and comedy in equal measure as a Yorkshire town struggling with rationing after the war. Terrific tunes and great comedy made this a show to remember.

Something Different In July following the huge success from last time around in 2011 we are going to be putting on an encore run of the Broadway Parody revue show **FORBIDDEN BROADWAY'S GREATEST HITS**. This is a musical revue with a twist that takes well known musical theatre songs (from Annie, Les Miserables, Cats, West Side Story, Chicago, Rent, Spamalot, Fiddler on the Roof - etc.) gives them "alternative" lyrics and adds a tonne of humour and satire. It's all done in pretty good taste and fans of musicals and comedy will love it! On at Dixon Theatre from 17th July - Don't miss it!

The Future of LODS Then lastly in July we are going to be presenting the Essex Amateur Premiere of Andrew Lloyd Webber's "WHISTLE DOWN THE WIND".

Whistle Down the Wind revolves around the time and place where the word teenager was invented. Swallow, a 15 year-old-girl growing up in America's deep South in the fifties, discovers a mysterious man hiding out in a barn. When she asks who he is and the first words he utters are "Jesus Christ", it's as if all her prayers have been answered. Swallow and the town's other children vow to protect the stranger from the world that waits outside – the townspeople who are determined to catch a fugitive hiding in their midst. As fantasy and reality collide, Swallow is torn between the two and begins to discover who she is and where she is going.

Andrew Lloyd Webber's emotive score combines hauntingly beautiful love songs and explosive rock music with lyrics by acclaimed rock'n'roll songwriter Jim Steinman. The score contrasts the relentless influence of the modern world with the traditional values of the old days – something which the community at the heart of Whistle Down the Wind yearns to return to. Showing at Palace Theatre, Westcliff from 18th -21st October 2017.

For more information on our shows or details on how to join us go to www.lods.co.uk.

To book tickets for our latest productions visit www.southendtheatres.com and you can also find us on social media - search official LODS and leighods on twitter, facebook or instagram.



To find out more about the Love Independent Leigh campaign and how you can get involved, visit...

www.facebook.com/loveindependentleigh



It's hard to imagine Leigh being anything other than the flourishing town it is today, attracting visitors all year round with its cafe culture and charming shops, but something is indeed changing. Leigh is increasingly attracting attention from big name chain brands that are keen to make an easy buck off of the town's current popularity, threatening the diversity and individuality that Leigh currently has. In response to this, the 'Love Independent Leigh' campaign was launched with the intention of raising awareness about the issue and bringing traders and residents together to ensure Leigh retains its independent businesses and, with them, its unique character.

Having launched in February, the campaign's Facebook group quickly gained support from locals and now has over 880 followers. 'Love Independent Leigh' posters have been popping up outside a number of independents around town who are eager to show their support and a number of other activities are in the pipeline to actively encourage shoppers to support the independents - including a 'Love Independent Leigh' event day this summer.

Local resident and founder of the campaign, Francesca Quinn, says, "A lot can be achieved when people come together in a positive way to speak up for what they believe in. There's a fantastic sense of community in Leigh and it's been great to see that in action through the campaign. A bland high street full of chains is not what people want here and now they have a platform to express that and actively prevent it."

Barlow & Fields

We're an independent coffee shop established for just shy of five years. Each day we serve a lunch spread made up of stuffed loaves (generally a meat one and a veggie) and an array of grains and salads made from fresh locally sourced produce. We always aim to have a decent selection of options for anyone looking for particular dietary needs such as vegan or gluten free food or indeed cakes, not treating it as an afterthought. We take pride in the preparation of our coffee and tea, and know our flat whites from our Lattes. We want your milk to be smooth and silky and your espresso to have a good rich crema. At the same time, we offer an informal service. Help us learn your name and we'll remember your coffee the moment you get through the door!



Yulan

Husband and wife team Paul and Yu Lan have worked together in Burkmar Jewellery for 15 years. They both design and make their own jewellery supplying shops and galleries all around the country, winning several national awards for their work. The expected silver, gold and platinum are all used in their work but also more exotic materials such as anodized aluminium (to add vibrant colour)

Paul is slightly more traditional in his work, bespoke wedding rings are his forte, often making silver samples of the designs for the customer so that they can be sure that their exact vision will come to life. Yu Lan is much more artistic and uses her jewellery making materials to create some very distinctive collages (based on Leigh on Sea Trawler Boats of course!) as well as hand made cards and other artwork.

In a world where jewellery "brands" seem to have taken over the trade, Paul & Yu Lan are happy tucked away in their Leigh alleyway serving the smaller percentage of customers who desire "that something different".

www.burkmarjewellery.co.uk • www.yulanjewellery.co.uk



Rebeus



Plannished Hearts



Castle Lawson Design

Lisa opened Castle Lawson Design in 2002 with the idea to create a unique space where her designs of contemporary jewellery could be made and sold under one roof. This enables a personal service to the customer and where if desired they too can have the input of creating 'one off' pieces. Lisa designs and creates personalised jewellery which are hand stamped with name, date or simply a message or quote for that 'personal' touch

When you step into Castle Lawson Design its like walking into 'Aladdin's Cave'...with an array of jewellery by independent designers, leather handbags, ladies & children's clothing....perfect for gifts or simply treating yourself & loved ones.



Two Tree Island

Two Tree Island is a little gem, one of the worst kept secrets in the town. Every week hundreds of people pour down Belton Way and drive across the bridge to experience 'Island Life.'

With its scurrying paths through hedgerows of hawthorn and blackthorn it is a world away from the busy Broadway. In Summer the native scrub is filled with the chattering ranks of warblers and during the Autumn it bears witness to the arrival of tens of thousands of waders. Here you can observe dreamy brackish lagoons, walk alongside muddy creeks and gaze across salt marsh filled with the echoing cries of curlews and redshanks scattering in the coastal breeze. In short, it appeals to almost everyone who feels like a good stretch and a breath of fresh air.

The island is 640 acres of natural landscape and one of the largest reserves managed by Essex Wildlife Trust. The maintenance of the island relies to a large extent on volunteers who meet on the second Sunday in the month (and Wednesday evenings during the summer). Most of the work involves keeping pathways clear, repairing broken fences and cutting back vegetation. Grass cutting is achieved using sit on mowers, bar mowers and brush cutters – we even wield slashers when machines find the going tough! On one particular weekend, a team of fellow volunteers come down from Epping to help us build up depleted salt marsh by deploying stakes and hazel faggots. During the non-growing season we have more time to undertake projects such as providing natural habitats for the existing wildlife and encouraging new species onto the island such as turtle doves.

If you are interested in volunteering or require further information please contact me at cliveawebster@hotmail.co.uk



Curlew



Redshank

A walk back in time- Leigh's Heritage Trail

If Two Tree Island is one of the worst kept secrets in the town, then Leigh Society's Leigh Heritage Trail is one of the best kept secrets. Going now for three years, the website has attracted over 4,000 hits but few people know about it.

The circular trail is a virtual trail which means there is no pavement clutter of signs, information boards or plaques – everything is done by referring to the small brochure that accompanies the trail or online using a smart device.

The trail covers all the famous sights of Leigh and offers exhilarating views of the Estuary. Running under Google Maps it helps the user to navigate and click on points of interest. In essence it showcases the town.

The trail is broken down into four stages marked in red, yellow, blue and green and is 1.8 miles (2.9 kms) long. It takes approximately 45-60 minutes but most people will be tempted to stop off at one of the many pubs! You can join and leave the trail at any time and you can go in either direction (though it's described and numbered in a clockwise direction).

Due to the steepness of some sections, the trail is for able-bodied persons only and sturdy footwear is recommended. At certain times of the year protection against the elements is advisable and a pair of binoculars will add to the experience.

Why not have a go today by visiting www.leighsociety.com and clicking Leigh Heritage Trail?

Clive Webster





LEIGH FAMILY HISTORY CAN BE FUN

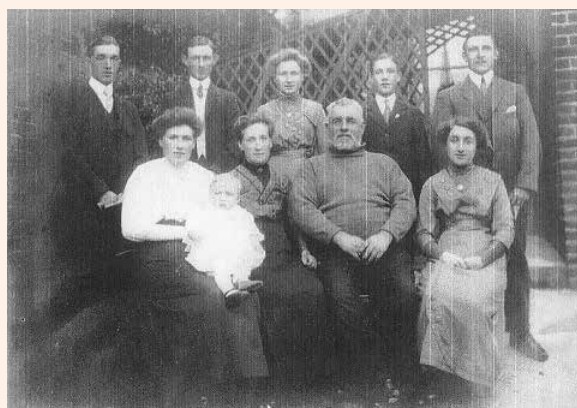
Leigh, and its people is a very special place and to research and gather local family histories helps build an archive and picture of family life, social and local history from Leigh's past. Carole Mulroney is passionate about gathering as much of this information as possible because it is her history too and goes back over 11 generations and 300 years in Leigh and covering all the Old Leigh names like Cotgrove, Bridge, Emery, Ford, Johnson, Palmer etc.

Carole has set up a web site, leighlives.co.uk, which is proving very popular, she also writes *Historicaleigh* for LeighonSea.com and runs a family history group for the Leigh U3A. She has been researching Leigh families for nearly 30 years using Parish Records, census returns and a host of other material which is available in record offices or on the internet.

If you're interested in researching your Leigh roots, Carole will be pleased to hear from you and is willing to help you with your research where she can. Over the years she has handled requests from people from all over the world who have family connections to Leigh and in return they have shared their family information.

So if you are connected to a Leigh family, or think you might be, please get in touch and she will try to help carole.mulroney@btinternet.com.

This picture shows the christening of Carole's father, Charles Palmer in New Road Methodist Chapel in 1914 combining the Bridge and Palmer families of Leigh.



From the
ARCHIVE



**And we keep on growing...
our Leigh population
22,000 in 2011 census.**

Homelessness in Leigh on Sea



Homeless and vulnerable people can often be found sitting in the doorways of shops in Leigh during the daytime or sleeping rough in the evenings. Despite intervention from Streetwise, the Council and HARP (Homeless Action Resource Project), the number of these vulnerable people is ever increasing. In Leigh there are groups of people who work to try and alleviate the problem of homelessness.

Serving the Homeless is an interdenominational charity based in Leigh that was set up in 1991. There are 7 parishes that make up 'Serving the Homeless.' At present only four of the parishes have members on the Committee but these represent the Catholic, Anglican and Methodist Churches. The aim of the charity is to support single homeless in the area. It is primarily a fundraising charity, which also tries to highlight the problem of Homelessness within the local community that it serves. Each week it provides meat and dairy produce for the homeless charity HARP that is used in the day centre and their other hostels. The charity works closely with HARP and the YMCA, which supports young vulnerable people.

Throughout this winter the hall in Leigh Road Baptist Church has been used every Monday evening as a winter night shelter. The average number of clients has been twenty. On these evenings the vulnerable clients have been offered an evening meal, camp beds with warm bedding followed by breakfast in the morning. On the other evenings of the week, six other churches throughout Southend have consecutively been open to offer warmth, food and shelter to these people.

At the Oasis Coffee Shop in Leigh Road a suspended meals fund has been set up to provide free meals for homeless and vulnerable people. The fund has been helped by the generosity of local people and the local charity, Serving the Homeless.

Leigh Fire Station and Community Engagement

What do you know about the role of the modern day firefighter? We're not the stereotypical 6-foot men who run from burning buildings with someone over our shoulder – our role and workforce has developed and so has our place in the community.

Thanks to our work in spreading safety messages throughout the community, incident numbers continue to go down. Essex County Fire and Rescue Service is continuing to invest in prevention and protection work, which sees us engaging more regularly with people like you.

As part of our priority to understand who is at risk in our communities, and reduce these risks, we visit schools, homes, work places and clubs to meet with all kinds of people. We also regularly hold events at our fire station and even offer a space for groups and clubs to meet in our Safe and Well Hub.



Whether it's a resident's meeting, a toddler's group, a faith and spirituality, LGBT or BAME group, or anything else where you need a safe space to meet, our Safe and Well Hub is available to book for free. During your meeting we'd also be happy to give safety talks and tailor them to your group's needs and concerns.

To book our Safe and Well Hub at Leigh Fire Station just email justin.benson-ryal@essex-fire.gov.uk

As always, we're so grateful to our local community for all the support and appreciation you give us, and we look forward to continuing to work together to make our beautiful town a safer place to live, work and travel.

THE ROYAL BRITISH LEGION – LEIGH ON SEA BRANCH

ACC 17 & SIR DAVID AMESS MP



The Royal British Legion Leigh on Sea Branch (TRBL) in partnership with Blade Education (BE) has successfully applied for funding to create a Southend Schools Festival of Remembrance.

Sir David Amess has been a long-standing supporter and patron of the Leigh on Sea Branch for many years and following his decision to nominate Southend as the alternative City of Culture for 2017, we were “invited” to coordinate a remembrance type event in November 2017.

Since we were already in discussion with a local not for profit organisation Blade Education regarding our wish to engage with local schools to explore with young people how remembrance is key to the TRBL Poppy Appeal, it was felt there was an ideal (almost perfect) opportunity to combine these objectives, subject to funding from the Heritage Lottery Fund – which we are delighted to report was granted very recently.

Following initial discussions, Beth Hooper of Blade Education came up with a number of suggestions - but the one that grabbed everyone’s attention was the idea that our small Branch could invite

all local schools in Southend to make/decorate ceramic poppies, which would then be placed on each of the commonwealth war graves situated in the various churchyards and cemeteries. It is understood that there may be as many as 430 such graves. This will be undertaken by our ambassador schools that supported the bid from Leigh on Sea to Shoeburyness for us to engage with the history of the poppy and the people who both died and survived from the Great War.

We will also be using the Wave poppy installation at Shoeburyness as an inspiration for the project and intend to create our own Southend version of this artwork in October 2017 with poppies made by local students.

This project will also produce an interactive trail supported by the War Graves Commission and local history specialists that pupils will help research. We want young people to discover the fascinating legacy of the people who lived through World War 1 in order to help connect them to an understanding of what remembrance means and why it is so important to us all.

If you would like to get involved or know more about the project, please email

Beth Hooper

beth@blade-education.org.uk

or Bob O’Leary TRBL (Leigh on Sea)

boboleary@btinternet.com



Essex County
Fire & Rescue Service

Smoke alarms save lives

Did you know we carry out free
home fire safety visits to any property?

Book yours now:
0300 303 0088
www.essex-fire.gov.uk/book

